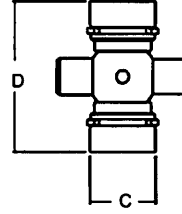
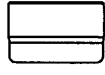


PTO IDENTIFICATION



C - Bearing Diameter
D - Cap to Cap Length

A Snap Ring located in the bushing (Internal)

B Snap Ring located in the yoke (External)

NORTH AMERICAN

| Stock No. | EXTENDED LUBE Stock No. | SERIES | (C) BEARING DIAMETER | (D) CAP TO CAP OVERALL LENGTH | SNAP RING TYPE |
|-----------|-------------------------|--------------|----------------------|-------------------------------|----------------|
| 200-0100 | N/A | Rockwell 1FR | 7/8" (.88) | 2 15/16" (2.94) | B |
| 200-0300 | N/A | Rockwell 3DR | 1" (1.0) | 3 15/16" (3.94) | B |
| 200-0600 | 201-0600 | 6 | 31/32" (.97) | 2 9/32" (2.28) | A |
| 200-0675 | N/A | 0675 | 15/16" (.94) | 2 5/16" (2.31) | A |
| 200-0700 | N/A | W | 9/16" (.56) | 1 1/2" (1.5) | Pin & Block |
| 200-1000 | N/A | 1000 | 15/16" (.94) | 2 23/64" (2.36) | A |
| 200-1200 | 201-1200 | 12 | 1 1/16" (1.06) | 2 1/2" (2.5) | A |
| 200-1400 | 201-1400 | 14 | 1 1/8" (1.13) | 2 5/8" (2.63) | B |
| 200-1401 | (Interchanges w/ Howse) | 14 | 1 1/8" (1.13) | 3 5/32" (3.16) | A |
| 200-1875 | N/A | 1800 | 1" (1.0) | 3 7/32" (3.22) | A |
| 200-2600 | N/A | 2600 | 1 3/8" (1.38) | 4 3/16" (4.19) | B |
| 200-3500 | 201-3500 | 35 | 1 1/4" (1.25) | 3 7/32" (3.22) | B |
| 200-3501 | (Interchanges w/ Howse) | 35 | 1 1/4" (1.25) | 3 7/32" (3.22) | A |
| 200-4400 | 201-4400 | 44 | 1 5/16" (1.31) | 4" (4.0) | A |
| 200-5500 | 201-5500 | 55 | 1 17/32" (1.53) | 4 5/16" (4.31) | B |

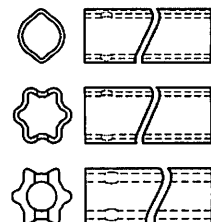
NORTH AMERICAN SHAFTING & TUBING



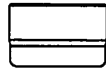
GERMAN SERIES

| Stock No. | EXTENDED LUBE Stock No. | SERIES | BEARING DIAMETER | CAP TO CAP OVERALL LENGTH | SNAP RING TYPE |
|-----------|-------------------------|--------|------------------|---------------------------|----------------|
| 200-7155 | 201-7155 | 2100 | 22.0 mm (.8661) | 54.8 mm (2.158) | B |
| 200-8261 | 201-8261 | 2200 | 23.8 mm (.937) | 61.2 mm (2.409) | B |
| 200-8370 | 201-8370 | I | 27.0 mm (1.063) | 70.0 mm (2.756) | B |
| 200-8474 | 201-8474 | 2300 | 27.0 mm (1.063) | 74.6 mm (2.937) | B |
| 200-8692 | 201-8692 | 220 | 30.2 mm (1.189) | 92.0 mm (3.661) | B |
| 200-7676 | 201-7676 | 2400 | 32.0 mm (1.259) | 76.0 mm (2.992) | B |
| 200-7989 | 201-7989 | 2500 | 36.0 mm (1.417) | 88.8 mm (3.496) | B |
| 200-7004 | 201-7004 | 2600 | 42.0 mm (1.654) | 104.0 mm (4.095) | B |

GERMAN STYLE SHAFTING & TUBING

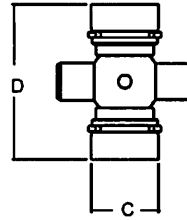


PTO IDENTIFICATION



A Snap Ring located in the bushing (Internal)

B Snap Ring located in the yoke (External)



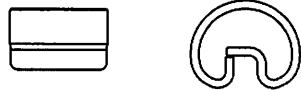
C - Bearing Diameter
D - Cap to Cap Length

ITALIAN SERIES

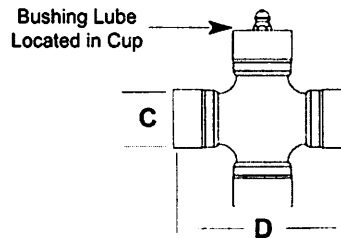
| STOCK No. | EXTENDED LUBE STOCK No. | SERIES | BEARING DIAMETER | CAP TO CAP OVERALL LENGTH | SNAP RING TYPE |
|-----------|-------------------------|--------|------------------|---------------------------|----------------|
| 200-6154 | 201-6154 | 1 | 22.0 mm (.8661) | 54.0 mm (2.126) | B |
| 200-8261 | 201-8261 | 2 | 23.8 mm (.937) | 61.2 mm (2.409) | B |
| 200-8370 | 201-8370 | 3 | 27.0 mm (1.063) | 70.0 mm (2.756) | B |
| 200-8474 | 201-8474 | 4 | 27.0 mm (1.063) | 74.6 mm (2.937) | B |
| 200-6580 | 201-6580 | 5 | 30.2 mm (1.189) | 79.4 mm (3.134) | B |
| 200-8692 | 201-8692 | 6 | 30.2 mm (1.189) | 92.0 mm (3.661) | B |
| 200-6794 | 201-6794 | 7N | 34.9 mm (1.374) | 94.0 mm (3.701) | B |
| 200-6806 | 201-6806 | 8 | 34.9 mm (1.374) | 106.5 mm (4.193) | B |
| 200-6908 | 201-6908 | 9 | 41.0 mm (1.614) | 108.0 mm (4.252) | B |

ITALIAN STYLE SHAFTING & TUBING

Tri-Lobe Profile



B Snap Ring located in the yoke (External)



C - Bearing Diameter
D - Cap to Cap Length

| STOCK No. | SERIES | BEARING DIAMETER | CAP TO CAP OVERALL LENGTH | SNAP RING TYPE |
|-----------|----------|------------------|---------------------------|----------------|
| 4120B0012 | S1 | 22.0 mm (.8661) | 54.0 mm (2.126) | B |
| 4120C0012 | S2 | 23.8 mm (.937) | 61.2 mm (2.409) | B |
| 4120E0012 | S4 | 27.0 mm (1.063) | 74.6 mm (2.937) | B |
| 4120G0012 | S5 or S6 | 30.2 mm (1.189) | 79.4 mm (3.134) | B |
| 4120H0012 | H7 | 30.2 mm (1.189) | 92.0 mm (3.661) | B |
| 4120L0012 | S8 or H8 | 34.9 mm (1.374) | 94.0 mm (3.701) | B |
| 4120M0012 | S9 | 34.9 mm (1.374) | 106.5 mm (4.193) | B |
| 4120N0012 | SH | 42.0 mm (1.653) | 107.5 mm (4.232) | B |

ITALIAN STYLE SHAFTING & TUBING

4 Tooth Profile

